

Please pass this email on to family, friends, colleagues and members of your community group or organisation.

The next tree will be Wednesday 20 December 2017. **Please have your contributions in by Tuesday 19 December 2017.**

Your fortnightly email tree is provided by the Portarlington Community Association



Celebrate music on our bandstand!!

for the first time in a VERY long time

a brass band will be in residence

Just In

10 December	Bandstand celebration!!!
10 December	Christmas Carol service
15 December	Portarlington Community Carols - update
Christmas	Christmas services - update
28 December – 4 January	Fun for primary and secondary school aged kids
31 December	New Year service
31 December	Fireworks on the foreshore
Various dates in January	Op Shed sales
20 January	Bellarine Comedy Festival is back
20 January	Hey Marylou, Runaround Sue, The Wanderer or Travelin' Man – this is for you!

Last Chance

9 th , 16 th and 23 rd December	Experience the journey AND the destination
10 December	Special prices for the Miniature Railway birthday celebration

And Don't Forget

Nothing to forget!

Calls for volunteers

Make our Mussel Festival the BEST!! It needs you - reminder

News

Community Service Recognition for our Lorraine Collinson

Understand and exercise your aged care rights

Time for a cuppa and read the Port Bay Express

Update: Project Respect and Equality Portarlington

Help Geelong be Healthy and Safe

Have a clean out and donate to Lions - reminder

Stay up-to-date [here](#)

Keep in touch with local groups, how to catch the ferry and free Wi-Fi sites. This is a work-in-progress with sites being added.

PortShare is [here](#)

PortShare is a work-in-progress and needs more volunteers to keep it up-to-date.

Just In

Bandstand celebration!!

12.00 – 3.54pm, Sunday 10 December at the Rotunda, Newcombe Street.

12.00 -1.15pm, grab a snag from the Lions sausage sizzle.



Experience our bandstand doing just what it was built for – bringing music and joy to our town.

The Geelong Memorial Brass Band will be the main performance, supported by the Portarlington Harmonica Band and the Retrofitters.

Please bring a chair or picnic rug so you can

relax and enjoy.

If the weather is bad, there will be an indoor venue so you can still experience the music. Flyer attached.

Christmas Carol service

5.00 - 6.00pm, Sunday 10 December at St John's Anglican Church, cnr Fenwick and Brown Streets.



You are warmly welcomed to come along and sing or enjoy the Carol service

There will be Christmas refreshments after the service.

Portarlington Community Carols - update

6.30pm Food provided by the Portarlington/Drysdale Lions Club

7.00-9.00pm Community Carols



Friday 15 December at the Port Pier, behind the Rockwall Café.

Come along and enjoy the family atmosphere and join in as we sing some of the classic Christmas Carols.

Local artist performing this year include Julie Rock, Portarlington Uniting Church Choir, Port Whanau, Dianne Hutchinson, Lindsay Noss and Nick Bergin.

Santa, along with his helpers from the CFA, will sing a carol or two before handing lollies to all the children of all ages.

The night will end with a special performance by local artist Rick Peacock, along with Gabby and Layla, who will perform a series of classic songs for us all to sing along to or just sit back and be entertained.

The Portarlington Community Carols is a free event, proudly presented by the combined churches of Portarlington.

Bring your family, friends, picnic rug and chairs and take part in a fantastic night by the bay enjoying the carols leading up to Christmas.

Christmas services - update

Christmas Eve and Christmas Day.



Please read the attached as there have been some time changes.

Full details will be in the next Email Tree.

Fun for primary and secondary school aged kids

Morning and afternoon activities, Thursday 28 December - Thursday 4 January at Gate 3, Bellarine Bayside's Portarlington Holiday Park (the gate west of the main entrance to the park)



Activities for primary and secondary school children provided by PASUFM - Portarlington Scripture Union Family Mission.

All school aged children living or holidaying in Portarlington are welcome to enjoy the fun.

New Year service

9.00am New Years Eve Sunday 31 December at St Andrew's Uniting Church, cnr Newcombe and Fisher Streets.



You are warmly welcomed to attend the combined Uniting Church congregations of Portarlington, Drysdale and St Leonards service

as we say goodbye to one year and welcome the next.

Fireworks on the foreshore

9.30pm, New Years Eve Sunday 31 December on the Portarlington foreshore, near Sproat Street.



Bellarine Bayside is bringing us a family friendly fireworks display to welcome in the new year.

Bring the kids and the camera and have a fun evening.

As always, the fireworks are subject to weather conditions and of course cannot happen if there's a

total fire ban.

Op Shed sales

9.00am – 2.00pm, at the Lions storage shed, corner of Hood Road and Gellibrand Street.

Wednesday 3 January

Saturday 6 January

Wednesday 17 January

Saturday 20 January

Wednesday 24 January

Saturday 27 January



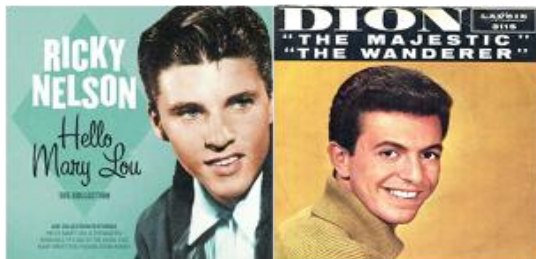
Our Lions Club raises funds that benefit our community, community groups, school, you name it.

Find just what you've been looking for at fantastic prices, so much so you will come back again!

Please read below about how you can donate pre-loved items to Lions.

Hey Marylou, Runaround Sue, The Wanderer or Travelin' Man – this is for you!

7.00 – 9.00pm, Saturday 18 November at the Music Café, St John's Anglican Church Hall, cnr Brown and Fenwick Streets.



Ricky and Dion are here! So are Abraham, Martin and John.

If you're a poor little fool or a lonely teenager, or just a tad older of course ...

Come along and enjoy a great night's entertainment and singing.

Cost is \$5.00 and includes coffee and light supper. Alcohol free evening. Flyer attached.

Bellarine Comedy Festival is back

Doors open at 6.00pm, show starts at 7.30pm, Saturday 20 January at Parks Hall, Newcombe Street.



Our Portarlinton Demons Football and Netball Club is hosting a comedy marathon again!

Be prepared to laugh and roll in the aisles.

This is an over 18's night with raffles and door prizes.

Tickets are \$45.00 per person with supper supplied. Drinks at bar prices.

Please purchase tickets at

www.trybooking.com/book/event?eid=332079

For more information, please phone Linda on 0412 221 957 or email linda.shaw@me.com

Flyer attached.

Comedians include

Des Dowling - one of Australia's most versatile stand up comedy performers.

Anne Edmonds – an exciting stand-up, character and banjo-playing comedian

Rob Brown – with a diverse background to draw on, his comedy has been described as edgy and direct or conventionally unconstrained

Last Chance

Experience the journey And the destination

9th, 16th and 23rd December from Portarlington Pier.



Travel between Portarlington and Geelong by ferry. We're used to doing it by road but this is an exciting experience – see our shoreline from the Bay.

It's different, it's fun, it's an experience to enjoy.

Find out more about times and pricing at www.portphillipferries.com.au/event/geelong-to-portarlington-were-excited

Special prices for the Miniature Railway birthday celebration

11.00am – 4.00pm, Sunday 10 December at Point Richards



The great news is that everything on this day will cost only \$2.00: train rides, food, drinks, ice creams ...

Help the new volunteer group celebrate their 2nd birthday too!!

Bring a picnic lunch or have lunch with us on site.

Plenty of room to run and. Picnic tables, seats, electric BBQ and toilets available on site.

Let's get everyone outside in the sun and have some playtime.

A big thanks to all volunteers who forgo their free time to help run the mini railway, they are priceless. Fingers crossed for lovely summer weather.

And Don't Forget

Nothing to forget!

Calls for volunteers

Make our Mussel Festival the BEST!! It needs you - reminder



Our Mussel Festival needs volunteers to make it happen.

The festival is solely run by volunteers.

The committee only keeps what it needs to run the next festival and gives everything else back to our community via donations.

To volunteer, please go to www.portmusselfestival.com/volunteer/

News

Community Service Recognition for our Lorraine Collinson

Portarlington local, Lorraine Collinson has been recognised for her decades of volunteer work at the recent Bellarine Community Health Annual General Meeting.



Lorraine is an integral member of the Portarlington Ladies Auxiliary and has worked tirelessly for 40 years as a volunteer with Bellarine Community Health.

The Portarlington Ladies Auxiliary helped raise funds to establish the Portarlington Community Health Centre and continue to support the organisation, most recently donating funds towards the extension of the physical activity room.

Lorraine and husband Barry attended this week's Annual General Meeting where she was presented with a gift of thanks.

Bellarine Community Health is extremely grateful for the support of Lorraine and the 140 other volunteers who contribute on average, 17 thousand hours a year of voluntary service.

Image from left: CEO Shane Dawson, Lorraine and guest speaker Austen Paterson, a former CEO.

Understand and exercise your aged care rights

A new advocacy program has been launched by the Australian Government that will assist people aged 55 who need guidance navigating their aged care rights.

Older people, their families or carers in need of advocacy should call 1800 700 600 or visit [Older Persons Advocacy Network \(OPAN\)](#).



Older Persons Advocacy Network organisations:

Offer free, independent and confidential services that focus on supporting older people and their representatives to raise and address issues relating to accessing and interacting with [Commonwealth funded aged care services](#).

Seek to ensure that aged care consumers understand and exercise their rights and participate, to the maximum degree possible, in the decisions affecting their care.

Achieve this through the delivery of individual [advocacy support](#), [information](#) and [consumer and service provider education](#).

Nine State and Territory based organisations form the [OPAN network](#).

The services are funded by the Australian Government's National Aged Care Advocacy Program (NACAP), providing a national voice for aged care advocacy.

Time for a cuppa and read the Port Bay Express



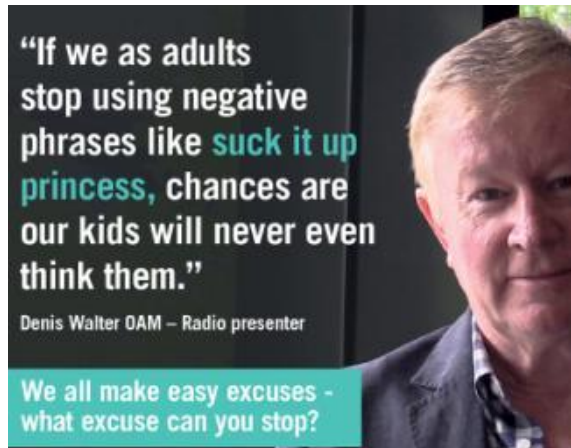
Our miniature railway volunteers are incredible and bring joy to children and adults.

Pour a cuppa and have a read of their latest newsletter attached.

Don't forget, volunteers are always welcome. Be a train driver!

Update: Project Respect and Equality Portarlington

Women's Health and Wellbeing Barwon South West are undertaking a place based project with funding from Bellarine Community Health's Health and wellbeing Fund.



Project Respect and Equality Portarlington aims to offer support and training to a vast cross section of the community.

The target group is a cross section of the whole population of the town, aiming at creating a respectful culture and challenging norms and practices that lead to disrespect towards women.

Portarlington has a current population of approximately 3,500 people.

Initial work has been undertaken to meet with all possible partners to outline the project and its capacity for positive change

both within their organisation and for the community as a whole.

As research suggests, prevention work needs to target people where they work, play, learn and socialise to be effective (Change the Story, 2015).

Please look out for workshops and events in local settings, schools and on social media. More information attached.

Help Geelong be Healthy and Safe

The City is currently drafting its integrated Council and Municipal Public Health and Wellbeing Plan.



We are seeking community feedback to gauge support for health and wellbeing actions to be included in this plan.

Under Section 125 of the Local Government Act and Section 26(3) of the Public Health and Wellbeing Act, the City must prepare a Council Plan and a Municipal Public Health Plan by 30 June 2018.

The legislation now provides the ability to integrate both these documents into one single plan. This is

the proposed approach for the City in 2018-21 to encourage a whole-of-Council focus on health and equity.

The Council and Municipal Public Health Plan will identify the priorities our new Council will focus on during their term, and work towards delivering the first three years of the Greater Geelong: a clever and creative future long-term vision and nine community aspirations. [Learn more about how you can be involved](#)

Have a clean out and donate to Lions - reminder

During the first half of 2018, the Portarlington-Drysdale Lions Club will hold 9 Op-Shed sales at their storage shed located at the corner of Hood Rd and Gellibrand St, Portarlington.



The Club is seeking donations of the following types of goods for the sales:

Bric-a-Brac, china & cutlery, glassware, hand and garden tools, Books, CD's & DVD's, bikes in good condition.

Pick-up of goods can be arranged by contacting the following people.

For Drysdale, phone Geoff on 0400 912 346.

For Portarlington, Indented Head & St Leonards phone Paul on 0413 756616.

Stay up-to-date

This is a work-in-progress to give you direct access to web and Facebook pages.

There's lots more web links on the Portarlington Community Association's website www.portarlington.asn.au/resources

Let me know if you want your group website or Facebook page added to the Email Tree [Return to top](#)

Bellarine Peninsula

Bellarine Belles	www.facebook.com/groups/bellarinebelles
Bellarine Community Health	www.bch.org.au www.facebook.com/bellarinecommunityhealthltd
Bellarine Police Community Support Register application	www.bellarineregister.org.au/join
Bellarine Times	http://bellarinetimes.surfcoasttimes.com.au/#folio=1
Festival of Glass	www.festivalofglass.net.au
Free Wi-Fi sites	Free WIFI Geelong website
Future Proofing Geelong	www.geelongaustralia.com.au/fpg/default.aspx
Portarlington Safe Harbour and Bellarine Ferry	www.bellarineferry.com
Port Phillip Ferries	www.portphillipferries.com.au
ReThink Your Rubbish	www.geelongaustralia.com.au/recycling/sign-up.aspx
UBER X Bellarine Peninsula	www.facebook.com/groups/UBERonthebellarine/

Portarlington

Bellarine Bayside e-news	subscribe via e-News here
Miniature Railway	www.facebook.com/miniaturerailway
Music Cafè@St Johns	www.facebook.com/Music-Cafe-at-St-Johns-Portarlington-1526910544275796
Neighbourhood House	www.portnh.org.au/
Portarlington parkrun	www.parkrun.com.au/portarlington
Portarlington Community Association	www.portarlington.asn.au/
Portarlington Business Development Association	http://pbda.net.au/
Portarlington Mussel Festival	www.facebook.com/port.musselfest
PUK (Portarlington Ukulele Collective) Robyn: 0402 319 124	
Primary School	www.facebook.com/portarlingtonps/
The Port Report	www.portarlingtonoz.com/
Sunday Market	www.facebook.com/portarlingtonprimaryschoolmarket
Sunday Market stall enquiry	0408 108 869
When Bush Comes to Town	www.timsheedbushpoet.com.au/bush_festival.html

PortShare

Community groups - please offer your resources to others. Generosity starts at home. It's better to use what's here instead of the expense that comes with duplication.

Does your group need to borrow something? Ask through PortShare and you will have a positive response or suggestions. [Return to top](#)

Check the latest draft of the revised PortShare at www.portarlington.asn.au/resources/
It's not finished but it gives you a chance to see where it's at.

If your group hasn't been contacted, please email me at elizturner@bigpond.com

The spirit of sharing and generosity is valued by so many of our community groups and individuals.

Personal sharing is now added. **You may have items you are happy to lend to others. If so, please let me know and I shall add to PortShare.**

We are a small town and it makes sense to share what we have.

We can support each other by sharing resources, whether it be borrowing a fee or donation.

Better to wear out than rust out

If you have guest speakers, call for volunteers, resources to share, activities your community group wants to promote or just want to tell others what you're doing – use the Email Tree to spread the word! The address for sending contributions is emailtree@portarlington.asn.au

Keep in touch with the Portarlington Community Association:

www.portarlington.asn.au

Kind regards

Elizabeth Turner

On behalf of the Portarlington Community Association

Tel: 5259 3057

Email: elizturner@bigpond.com

Thanks Jonathan Harris, JNH Software P/L www.jnhsoftware.com.au, for your wonderful community service by providing confidential back-up of recipient email addresses

This email is being sent to individuals, community groups and organisations that value volunteers plus businesses that want to stay in touch with Port:

Church by the Bay, Drysdale Community Church, St Andrew's Uniting Church, St John's Portarlington Auxiliary, St Patrick's Catholic Parish, Arlington Lodge, Bellarine Agricultural Show, Bellarine Aged Care Association, Bellarine Camera Club, Bellarine Ferry and Safe Harbour Group, Bellarine Police Community Support Register, Bellarine Quilters, Bellarine Women's Network, Committee for Bellarine, Country Fire Authority, Country Women's Association, Craft Unlimited, Festival of Light, Friends of the Bellarine Hills and Foreshore, Girl Guides, Indented Head Community Association, Lions Club, International Women's Club, Locomote, Mussel Festival Committee, National Celtic Festival, Port Arts Network, Port Bootscooters, Port Musos, Port Pedal Power, Port Snappers, Portarlington and District Garden Club, Portarlington Bellarine Miniature Railway, Portarlington Community Association, Portarlington Community Bank (Bendigo Bank), Portarlington Community Dance Group, Portarlington Friends Group, Portarlington Mill, Portarlington Mussel Festival, Portarlington Neighbourhood House, Portarlington Play Group, Portarlington Primary School, Portarlington Primary School Community Garden, Portarlington Primary School Community Market, Portarlington Probus Club, Portarlington Tourism Information Centre, Port Report, Probus Club of Portarlington Bayview, Rotary, RSL (Portarlington and St Leonards sub branch), St Leonards Community Space, St Leonards Progress Association, Salvation Army, Staying in Port (SIP), Toy Library, Walking Group, When Bush Comes to Town, Woofers and Walkers, Auskick, Bellarine Sharks, Bowls Club, Cricket Club, Football Club, Golf Club, Netball Club, Pony Club, Sailing Club, Tennis Club, Bellarine Bayside, Bellarine Community Health, Bendigo Bank, City of Greater Geelong Community Development Unit, Bellarine Times, Geelong Independent, Geelong Sustainability Group, McHarry's Buslines, Surf Coast Times, Volunteering Geelong, G21, Red Cross, Arcare Portarlington, Port Phillip Ferries.